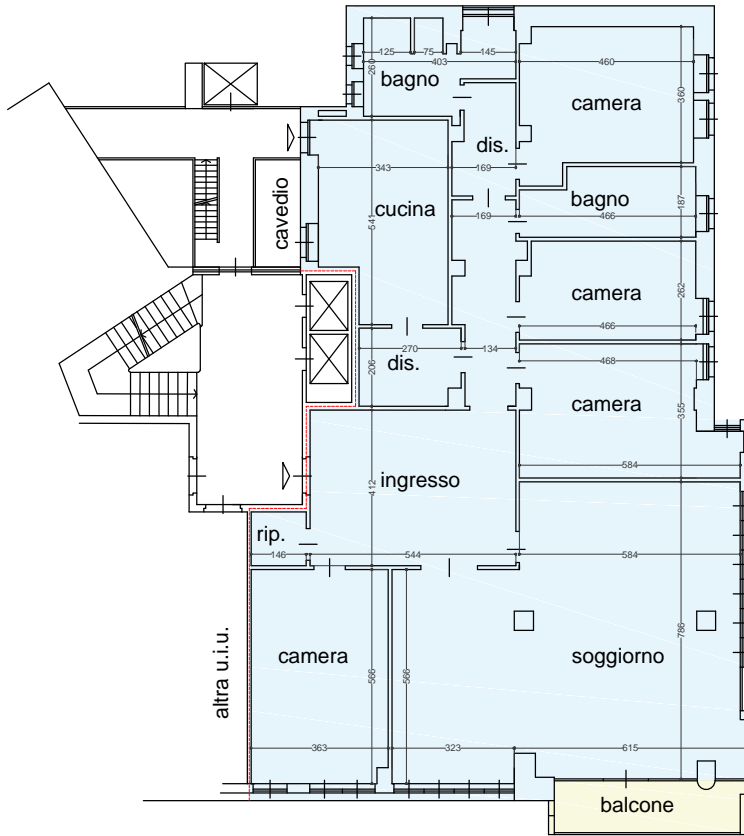


PIANTA PIANO NONO (11° f.t.)
h 3.05 mt

vuoto su Via San Francesco d'Assisi



PIAZZA SOLFERINO

VIA SANTA TERESA

SUPERFICI

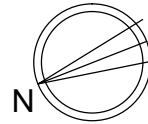
unità immobiliare: 238.37 mq

balcone: $7.55 \text{ mq} = 7.55/4 = 1.89 \text{ mq}$

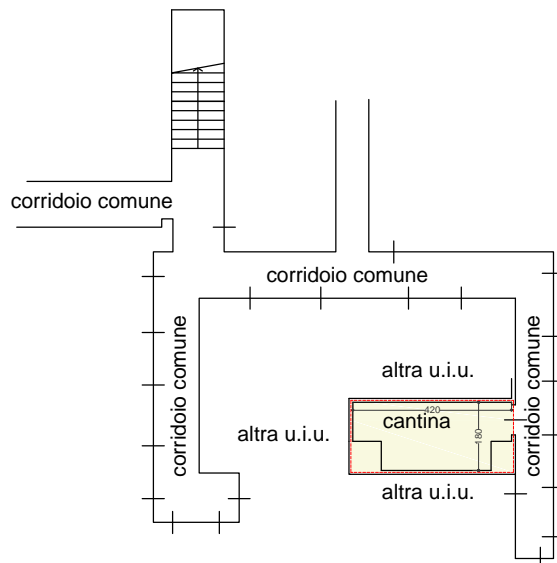
cantina: $8.20 \text{ mq} = 8.17/4 = 2.04 \text{ mq}$

TOT SUP Commerciale:

$(238.37+1.89+2.04) = 242.30 \text{ mq}$



PIANTA PIANO PRIMO INTERRATO
h 2.20 mt



Indirizzo: GALLERIA ENZO TORTORA 21 - piano 9° - torino
STATO DI FATTO - SCALA 1:200